

S-500 MOVEMENT HOLDER FOR Cal. 6139 (Automatic Chronograph)

HANDLING MANUAL

This movement holder can be used as a stand for setting sweep second hand and chronograph minute hand, and as a holder for the movement with dial and hands of the Cal. 6139 Automatic Chronograph.

A. When setting the hands

=Use the front side=..... (Photo 1)

Always set the hands before assembling the automatic winding mechanism.

Set the movement with dial and crown on the front side of the holder, adjusting dial deflection. (Photo 2)

1. Set the hour and minute hands, inspecting the following points:

(Procedures are the same as for conventional watch with day and date.)

- See if the date changes at 12 o'clock position.
- Check the clearance between dial and hands.

(Photo 3)

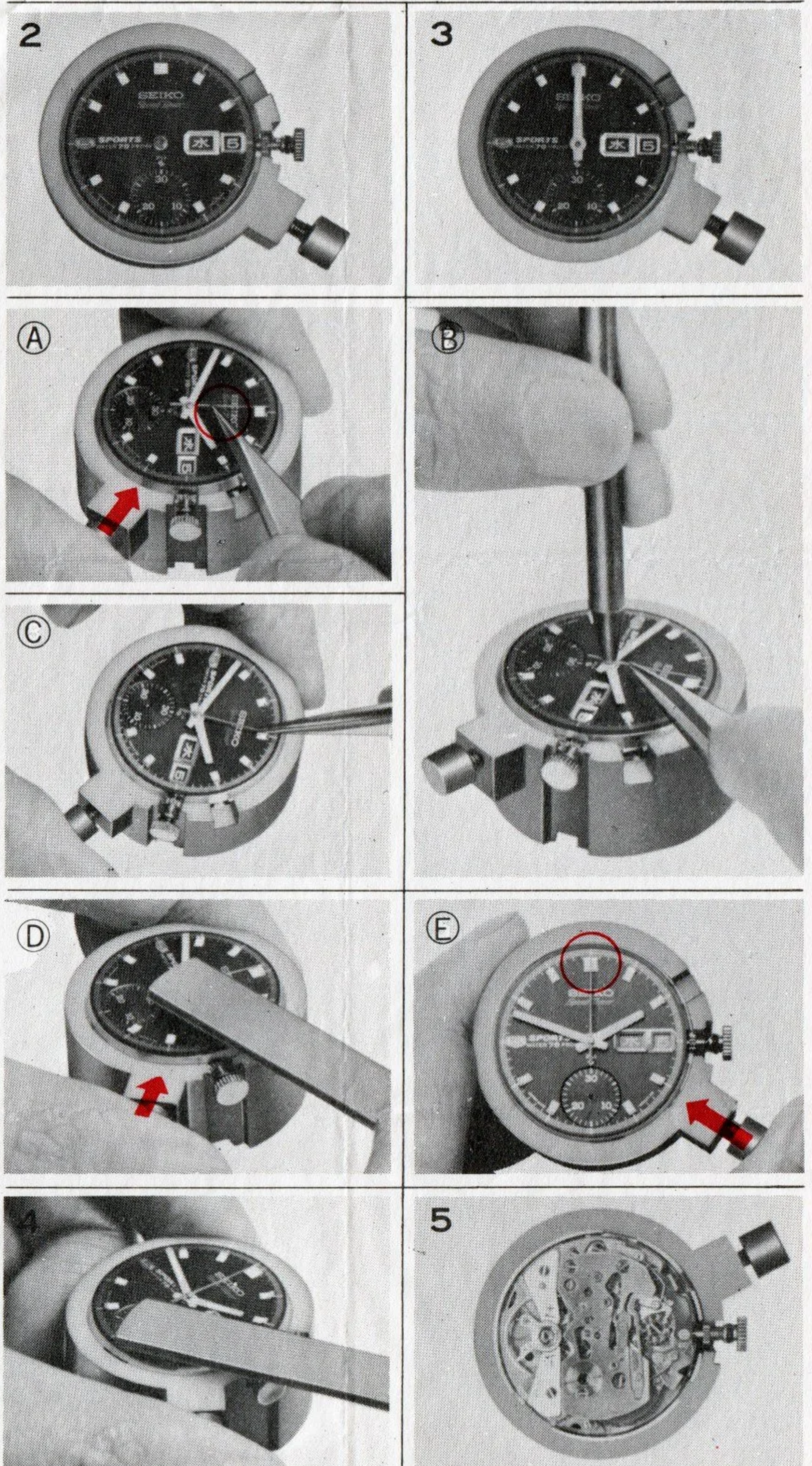
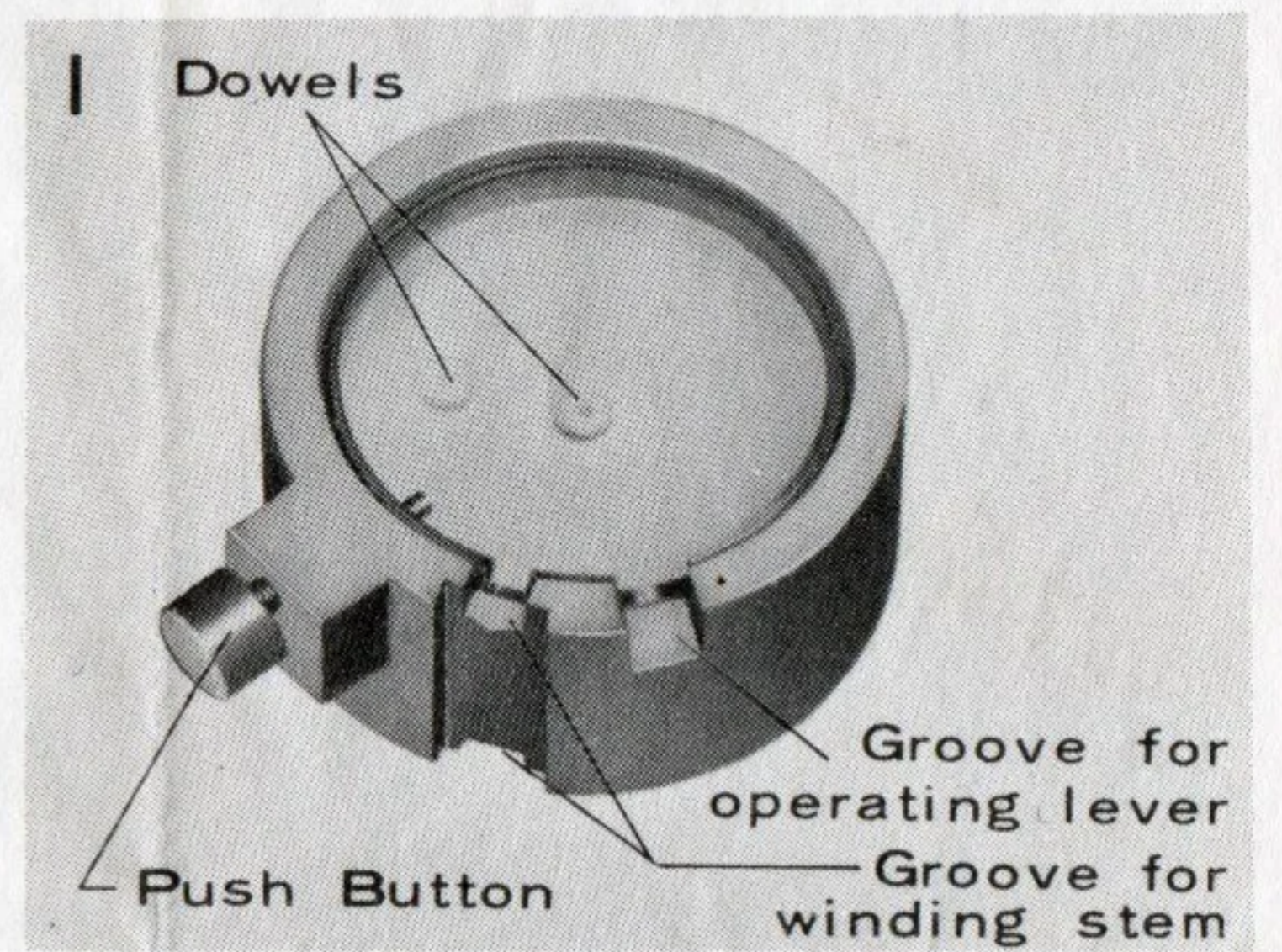
2. How to set the sweep second hand:

- For setting the sweep second hand at the "0" second position, set it at that position while keeping the push button depressed. (Photo A)
- Set the sweep second hand at the "0" second position, by pushing it in lightly with a chisel tip to the extent that it does not slip off of the center chronograph wheel axle. (Photo B)
- Adjust the sweep second hand position to "0" second. (Photo C)
- Once more push in the sweep second hand deeper. Friction will be stronger than for an ordinary-type sweep second hand, but push it in sufficiently. (Photo D)
- Confirm that there is no slipping on the sweep second hand position after resetting it to the "0" second position. (Photo E)
- Repeat starting, stopping, and resetting several times, confirming that the sweep second hand has not loosened. While resetting, if the sweep second hand slips from the "0" second position, replace it with a new one.

3. How to set the chronograph minute hand

Set the minute hand on the "0" minute position in a resetting condition by employing the same procedure as for setting the sweep second hand. (Photo 4)

- ### B. Use the back side of the Movement Holder (side without metal ring) for checking the chronograph mechanism, after setting the movement with dial and hands. (Photo 5)



SEIKO

HATTORI TRADING CO., LTD.